



NOAA
FISHERIES

**SCHOOL
OF AQUATIC
& FISHERY
SCIENCES**

Think Tank **W**

Advancing length-only stock assessment applications and unifying data-limited stock assessment modelling using Stock Synthesis

Dr. Jason M. Cope

Northwest Fisheries Science Center

NOAA Fisheries

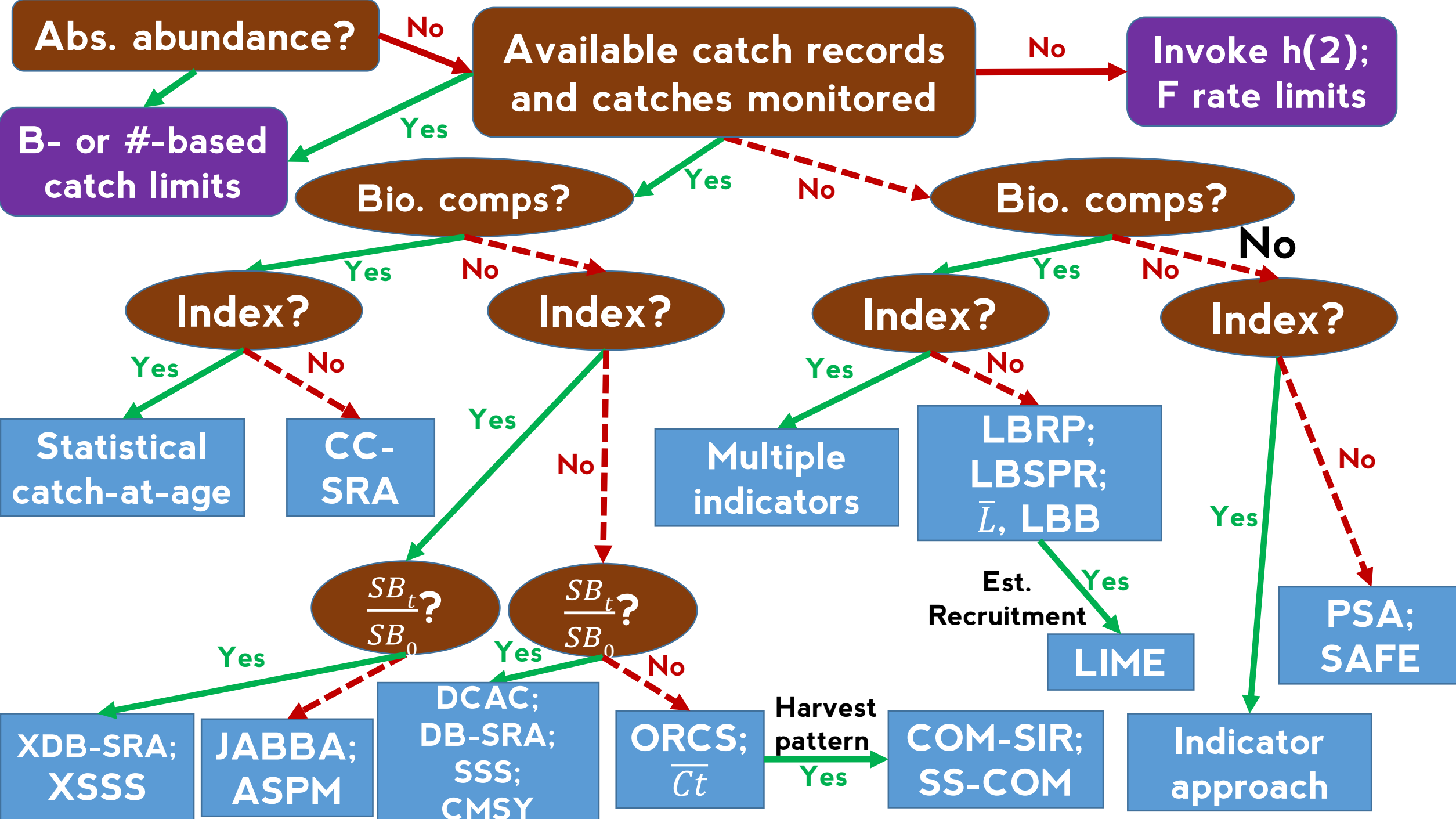
Collaborators:

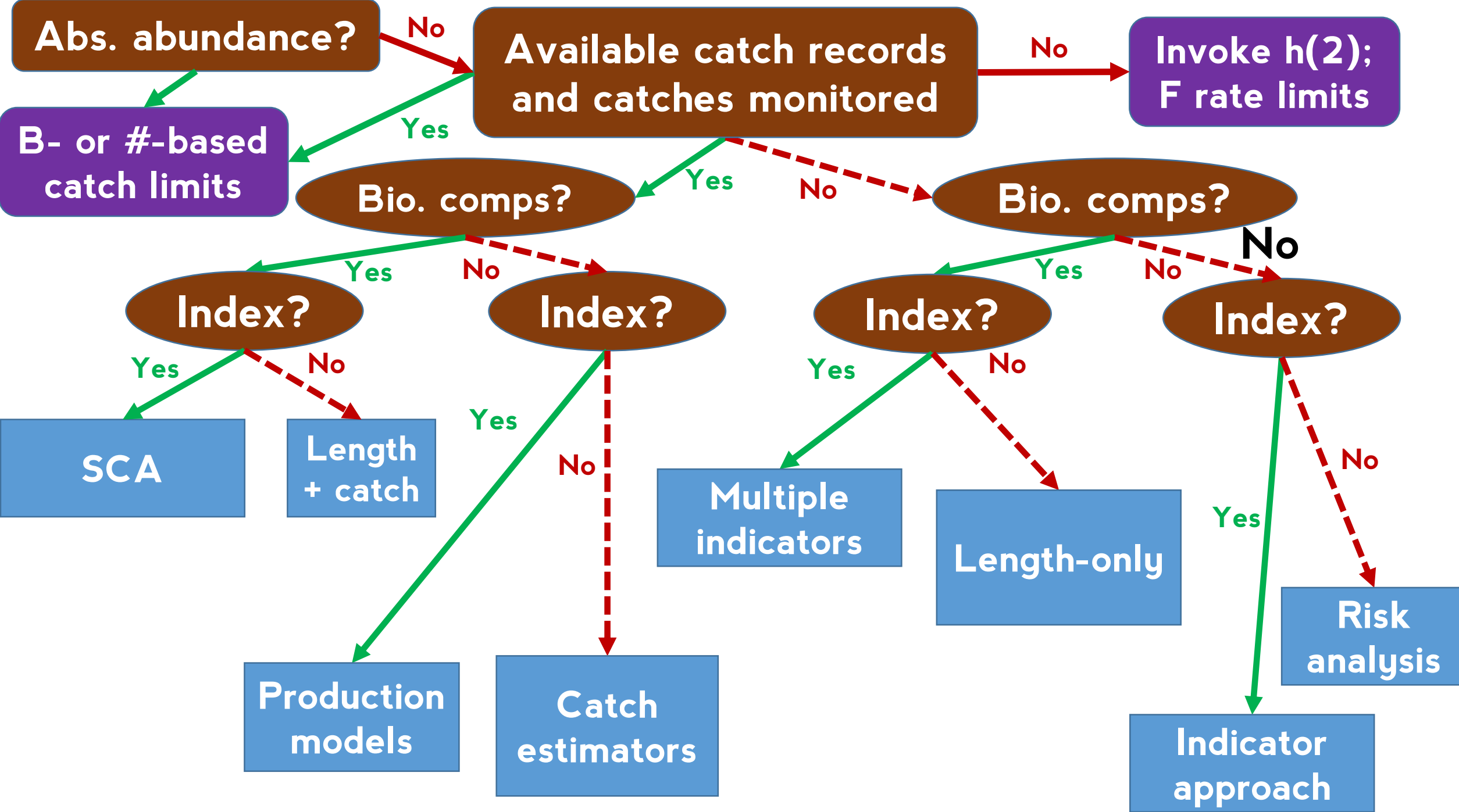
Dr. Chantel Wetzel

Dr. Merrill Rudd

Data-limited applications

Method	Data	Output
Length-only (LBS PR; LIME)	Length compositions	Stock status: F
Indicator method	Abundance index	Catch or F
Multiple indicator	Length composition + abundance index	Catch or F
Catch-only (CMSY ; DCAC , DBSRA ; SSS)	Catch history	Catch
Extended catch-only (XDBSRA ; XSSS) and Production (JABBA ; ASPM) models	Catch history + abundance index	Catch, F, status
Length+catch models (if 1 yr: CC-SRA)	Catch history + length/age compositions	Catch; F; status
Statistical-catch-at-age (SS)	Catch history + index + length comps	Catch; F; status





Abs. abundance?

No

Available catch records and catches monitored

No

Invoke h(2); F rate limits

B- or #-based catch limits

Yes

Bio. comps?

Yes

No

Bio. comps?

No

Yes

No

Index?

Index?

Index?

Index?

Yes

No

SCA

Length + catch

Yes

No

Production models

Catch estimators

Yes

No

Multiple indicators

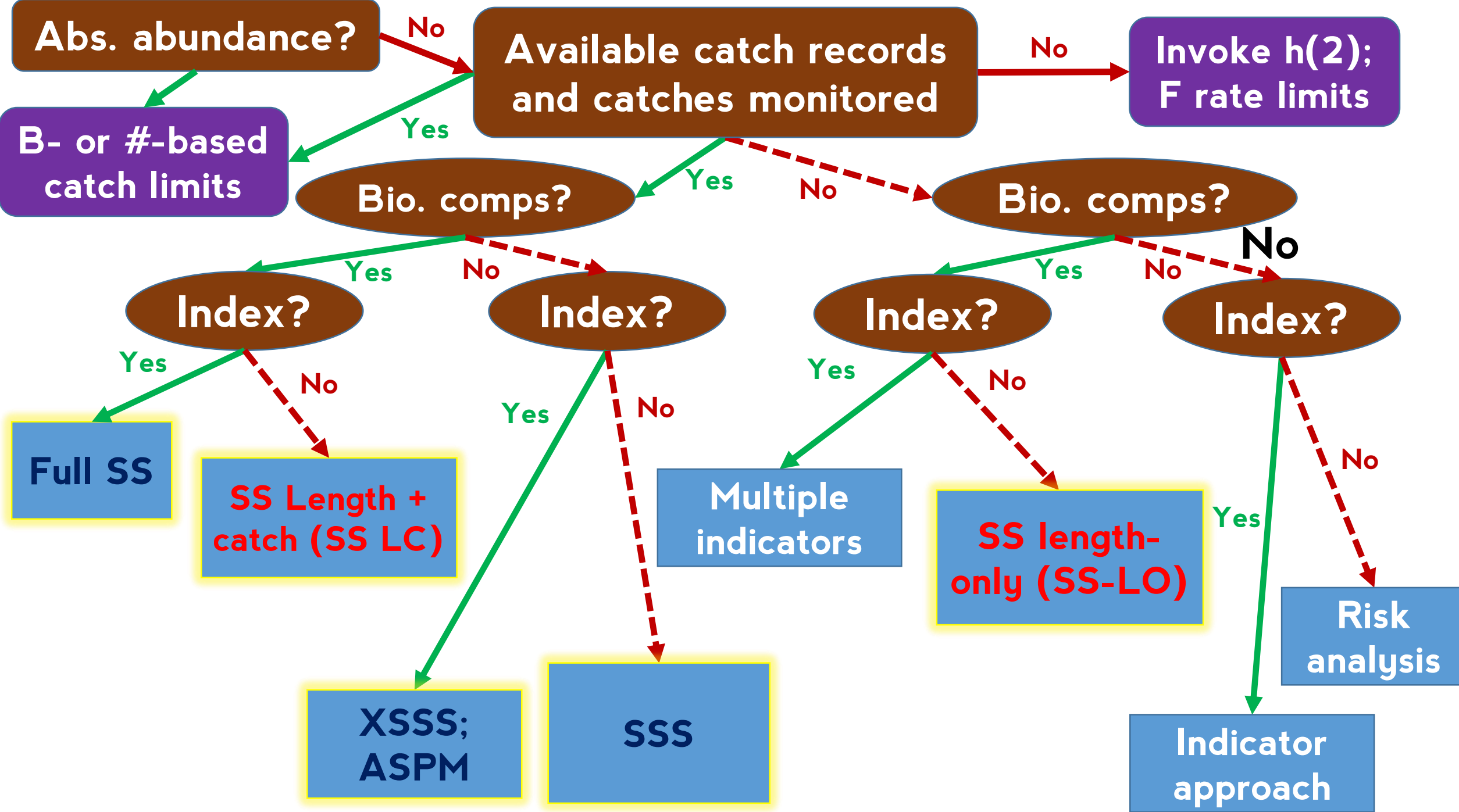
Length-only

Yes

No

Indicator approach

Risk analysis

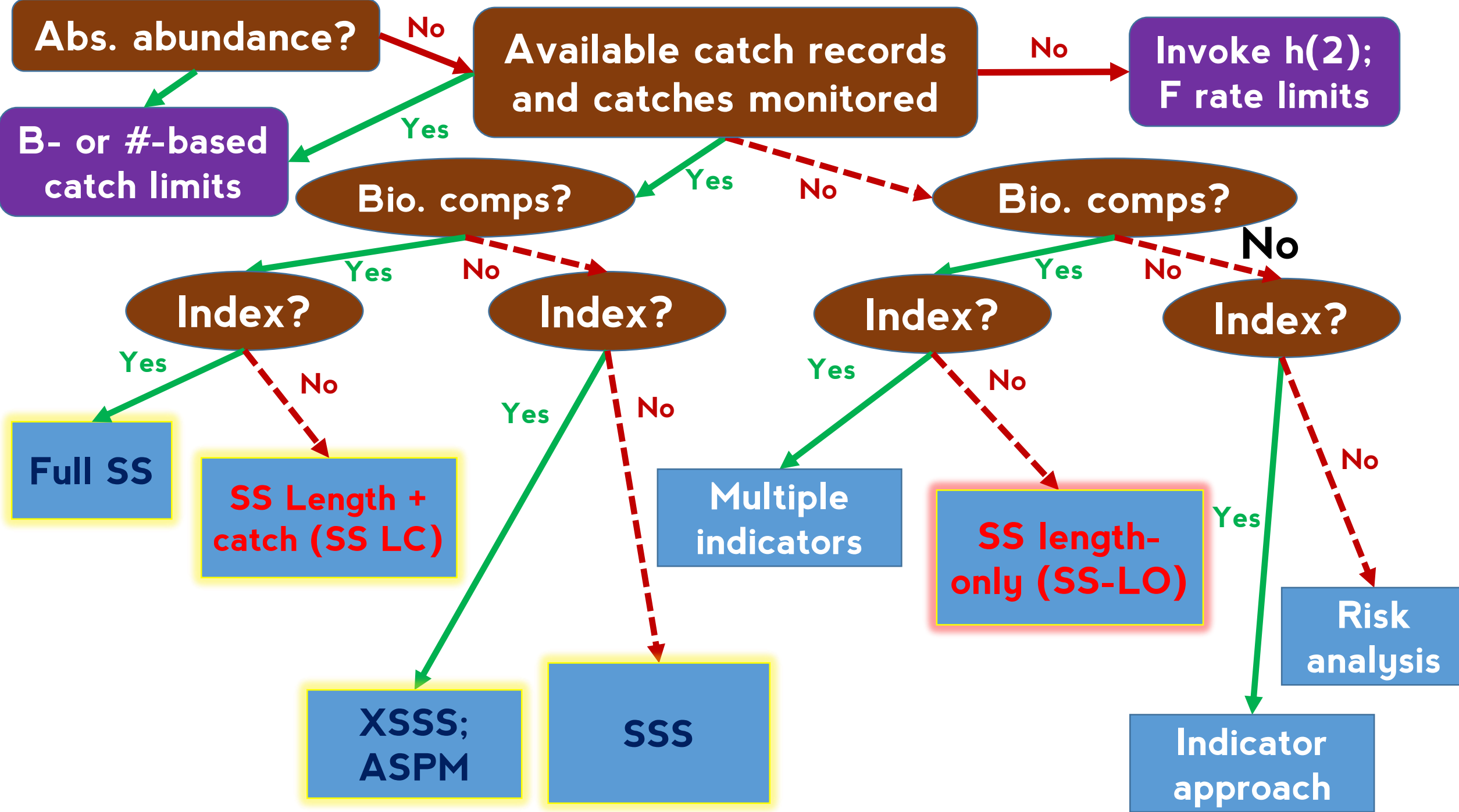


Benefits to common platform

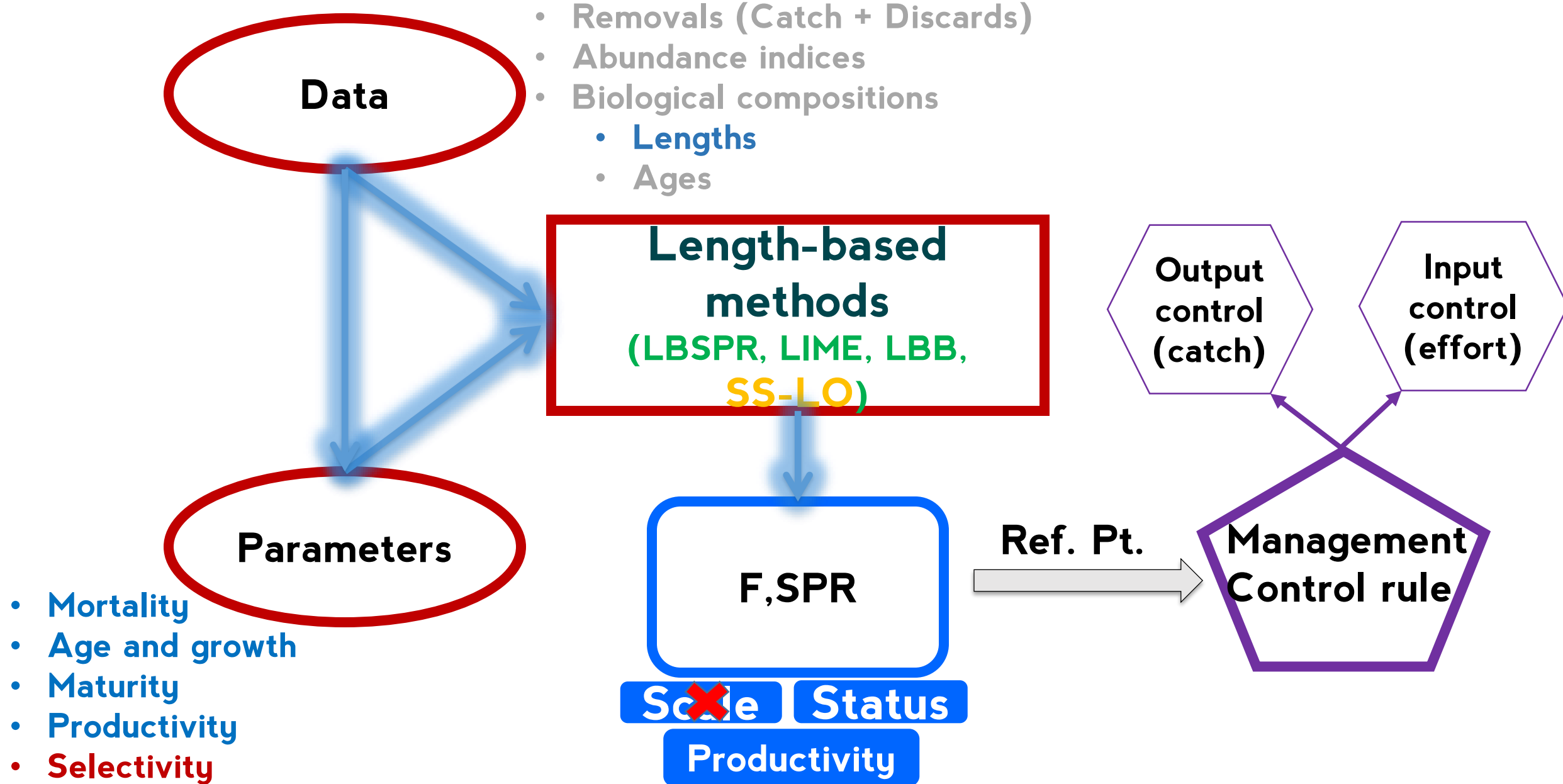
- **Need only to learn one file system**
 - **Can add more information as it is available**
- **Leverage platform development from others**
 - **Features and flexibility**
 - **Diagnostics and visualizations**
- **Can compare different approaches/data uses more explicitly.**
- **Explicit adaptive management implications**

Benefits of one tool approach

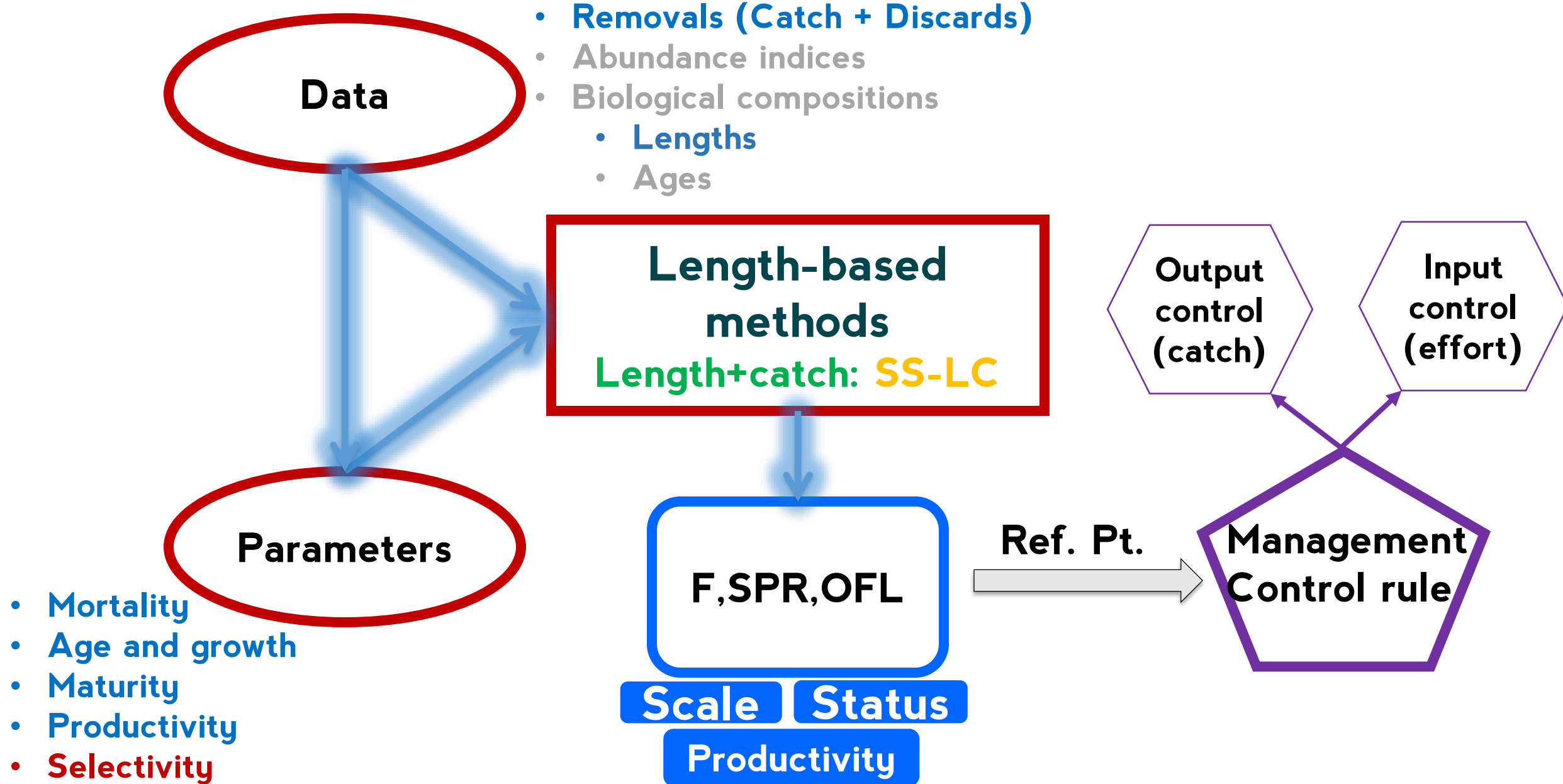
- **Simplify connectivity between methods**
 - **Even when using SS as platform, approaches are not the same.**
- **Quicker exploration of model specification**
 - **SSS vs XSSS vs SS**
 - **What does adding different data do?**



Applied stock assessment: Length-based



Applied stock assessment: Length-based



Length-only models: assumptions

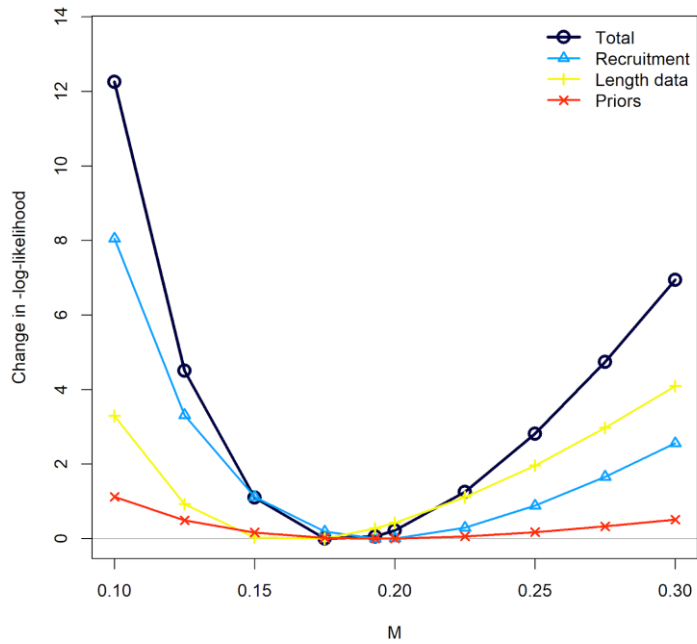
- **SPR is an analog to relative spawning output**
 - **SS-LO: outputs relative spawning output**
- **Females only**
 - **SS-LO: sex-specific data and parameters**
- **One fleet**
 - **SS-LO: Multiple fleets**
- **Asymptotic selectivity**
 - **SS-LO: Dome-shaped selectivity; sensitivities**
- **Limited life history detail**
 - **SS-LO: More options for sensitivities (e.g., length CV)**
- **No recruitment estimation (exception: LIME)**
 - **SS-LO: Estimates recruitment; integrates multiple years**

Length-only models: set-up

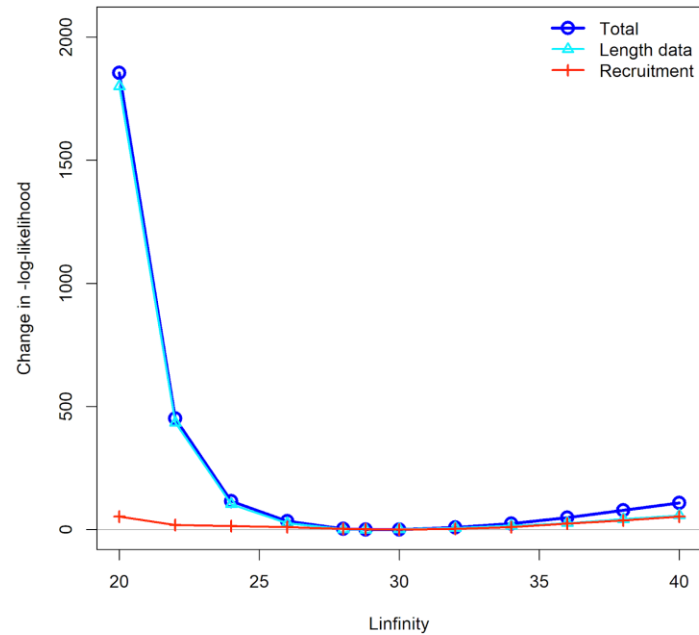
- Estimate initial F
- Set catches to an arbitrary common value for all years. Very large CV is added.
- Add lengths
- Add biological parameters
- Define selectivity forms
- Choose whether to estimate recruitments
- Turn off catch likelihood; keep on the initial F likelihood

Estimating parameters: Likelihood profiles

Changes in total likelihood



Changes in total likelihood



Changes in total likelihood

